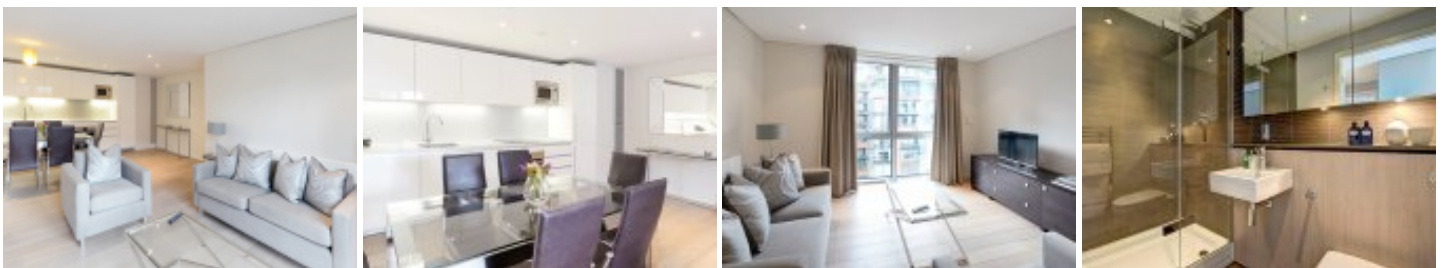


Merchant Square East, London, W2



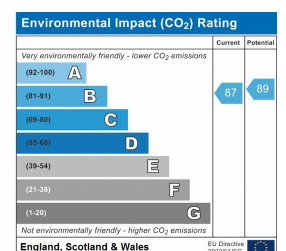
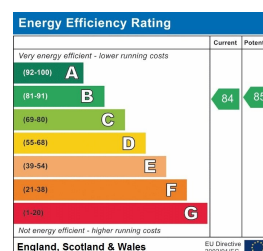
3 beds 2 baths 1 living

£1450 pw

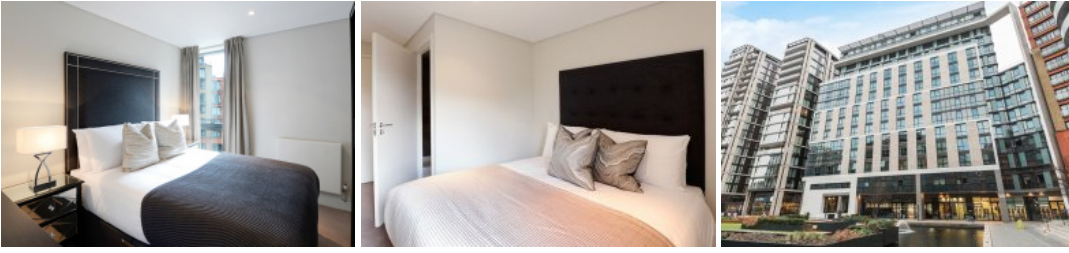


Key Features

- 3 bedroom
- 2 bathroom
- Canal views
- Private underground parking spaces
- Four minute walk from Edgware Road underground station
- On-site building manager



Full Description



Belvoir are pleased to present to the market Available Now! A spacious and luxurious 960 sq.ft, 6th floor, 3 bedrooms, and 2 bathrooms modern designed flat, available furnished or unfurnished.

CCTV, Digital TV, Available furnished or unfurnished, Lifts, Parking, Porter, Shops, Video Entry. This amazing apartment finds itself on the sixth floor of this ideally located building in the Paddington Basin overlooking the Water. The building has a dedicated building manager, a concierge, lift service and secure underground parking.

The stunning apartment comprises spacious living and entertaining space with a beautiful reception room with superb views of the Grand Union Canal, a splendid modern fitted open plan kitchen, three bedrooms, two bathrooms and ample storage space.

Exclusive deals and discounts in local restaurants and gyms.

The apartment offers easy access to superb transport links such as Paddington Train Station (Bakerloo, Hammersmith & City, Circle, District lines and Heathrow) and Edgware Road (Circle, District and Bakerloo lines).

Merchant Square East, London, W2

